

Tillsonburg Community Centre – Construction Update

June 2024

Further exterior and interior progress was observed during the month of June.

Exterior aluminum curtain wall framing and glazing has been installed. Building envelope membrane installation and the spray polyurethane insulation application are nearing completion.

Interior steel stud framing, drywall installation, HVAC, plumbing, electrical, and sprinkler work is continuing to push forward. Concrete block erection is continuing within the existing renovated areas and brick work has now commenced within the vestibule/lobby areas. The new lobby stair is also set in place.



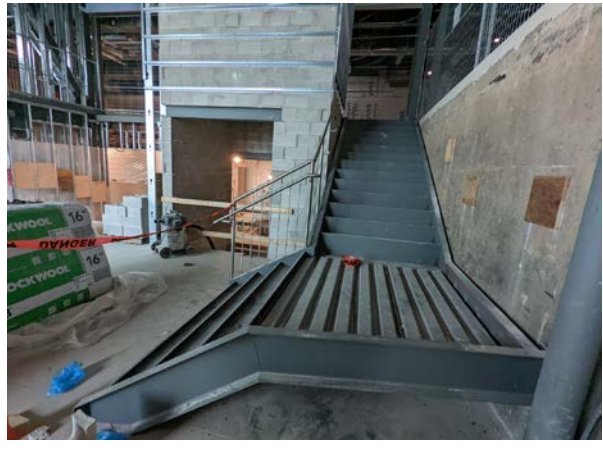
Exterior: View towards the north (South Entry from Hardy Ave.)



Interior: View towards the west (accessible change room)



Interior: View towards the west (main entry and lobby area)



Interior: View towards the north (lobby elevator and stair)

Anticipated work for July 2024:

- Aluminum curtain wall framing installation will continue
- Masonry work to continue
- Interior steel stud framing and drywall installation will continue
- Fireproofing to commence
- Mechanical, electrical and plumbing work will continue
- Ceiling installation within the existing change room areas will continue
- Exterior wall assembly construction will continue; siding installation to commence
- Roofing corrections will commence
- Existing masonry repair work to commence
- Exterior retaining wall construction and site work will continue

a+LiNK Architecture Inc. will continue to provide monthly construction updates on the Tillsonburg Community Centre Addition.